

# NO SOLDER REPLACEMENT VALVES

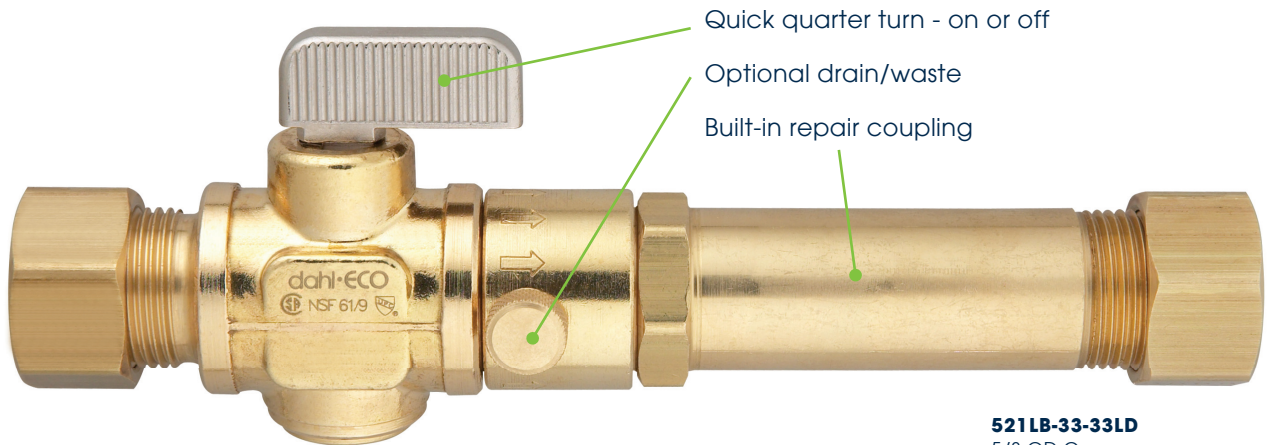


lead-free products  
dahl, the quality leader for over 60 years

No Worries  
No Dezincification  
No Cracking  
No Kidding\*



## For 1/2" and 3/4" Copper Pipe



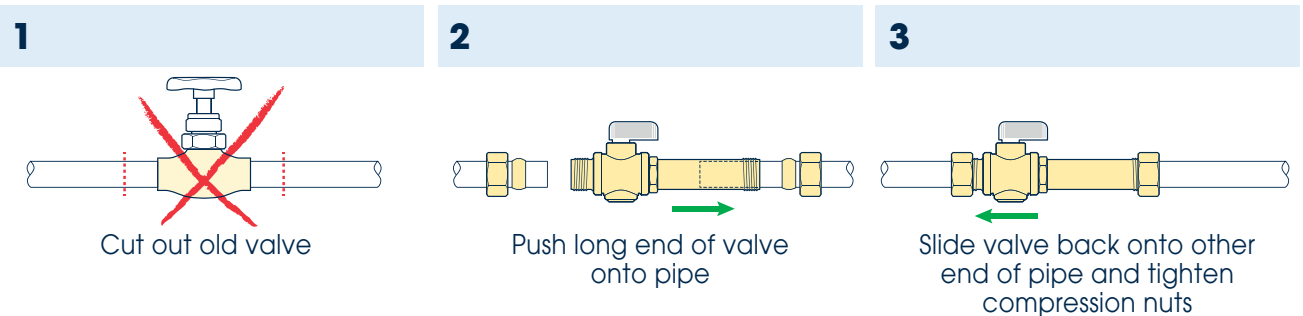
Quick quarter turn - on or off

Optional drain/waste

Built-in repair coupling

**521LB-33-33LD**  
5/8 OD Comp  
x 5/8 OD Comp Long  
with Drain/Waste

## Installs easily, even on wet pipe!



## Better Flow with dahl 1/4 Turn Valves

**Globe Valve**

1/2" - CV = 2.25  
3/4" - CV = 4.0

**No Solder Valve**

1/2" - CV = 7.5  
3/4" - CV = 6.5

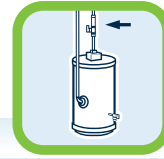


Made in Canada with American Materials

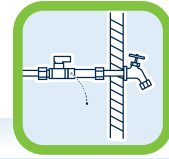
\* Versus competitive alloys tested. Independent Laboratory test results available at [www.dahlvalve.com](http://www.dahlvalve.com)

# NO SOLDER REPLACEMENT VALVES

## Available Models



WATER HEATER



WINTERIZING

VALVE	DESCRIPTION
<b>521LB-33-33L</b>	5/8 OD Comp x 5/8 OD Comp Long, Large Bore
	
<b>521LB-33-33LD</b>	5/8 OD Comp x 5/8 OD Comp Long, Large Bore, with Drain
	
<b>521-35-35L</b>	7/8OD Comp x 7/8 OD Comp Long
	
<b>521-35-35LD</b>	7/8 OD Comp x 7/8 OD Comp Long, with Drain
	
<b>521LB-35-33L</b>	7/8 OD Comp x 5/8 OD Comp Long
	
<b>521LB-35-33LD</b>	7/8 OD Comp x 5/8 OD Comp Long, with Drain
	

dahl

**dahl Brothers Canada Limited**  
 2600 South Sheridan Way,  
 Mississauga, ON, Canada L5J 2M4  
[www.dahlvalve.com](http://www.dahlvalve.com)

**1.800.268.2363** U.S. Toll-Free  
**1.800.268.5355** CAN Toll-Free  
**1.800.226.1801** CAN & U.S. Fax  
[sales@dahlvalve.com](mailto:sales@dahlvalve.com) E-mail



NSF/ANSI 61-G  
 Made in Canada  
 2013/09/12